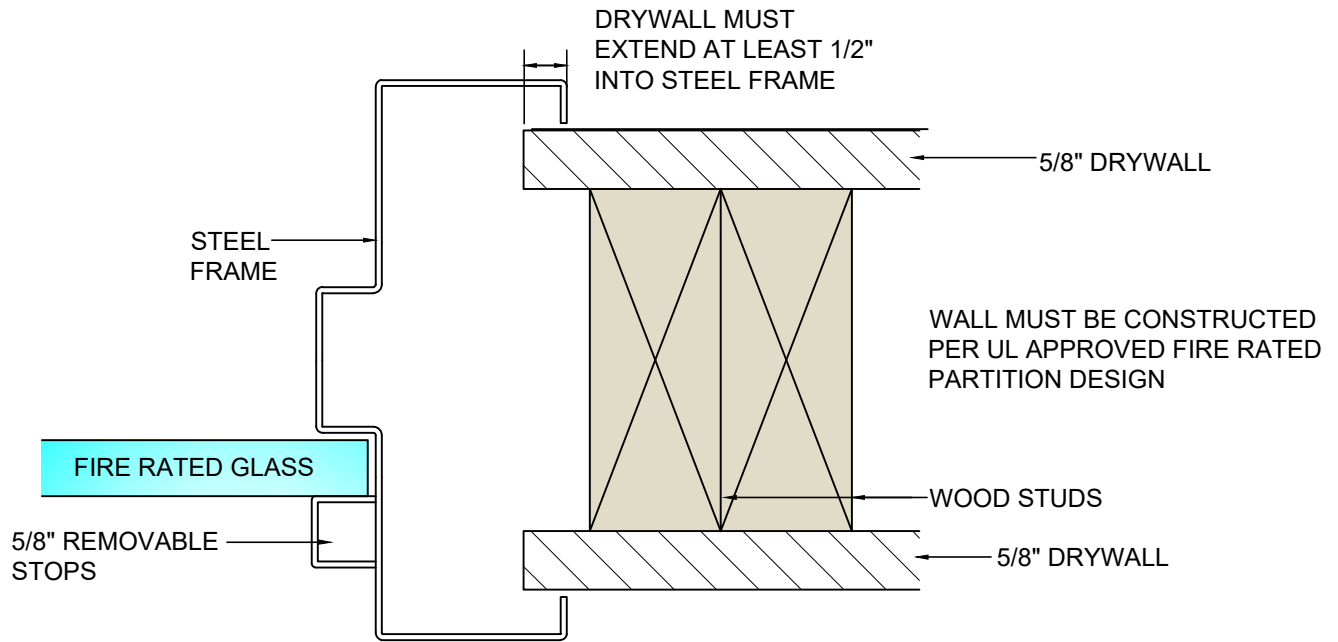


# RAY-BAR FIRE RATED HOLLOW METAL WINDOW FRAME

IT IS THE RESPONSIBILITY OF THE CUSTOMER TO VERIFY AND CONFIRM FIRE RATING REQUIREMENTS PRIOR TO ORDERING



## FIRE RATED WINDOW FRAMES: GLASS OPTIONS

- AVAILABLE WITH FIRELITE-NT, FIRELITE + PLUS, WIRELITE-NT, FIREGLASS 20 OR PYROSTOP
- FIRE RATED INSULATED GLASS UNITS (IGU)
- SIZE LIMITS APPLY DEPENDING ON RATING



Terms of Use: Certain designs and concepts are the exclusive proprietary property and work product of Ray-Bar Engineering provided in good faith as a courtesy for the architectural design of projects specifying, incorporating and utilizing genuine Ray-Bar products and assemblies. Ray-Bar designs are not to be copied, altered, plagiarized or utilized in any competitive or detrimental manner against Ray-Bar as protected by law and/or copyrights. "All Rights Reserved"

	JOB NAME:
	LOCATION:
	ROOM NUMBER:
	SHEET ____ OF ____:
RAY-BAR FIRE RATED HOLLOW METAL WINDOW	

<b>RAY-BAR ENGINEERING CORP.</b> Toll Free: 1(800) 444-XRAY / 1(800) 444-9729 Telephone: (626) 969-1818 24 Hour Fax: 1(800) 333-XRAY / 1(800) 333-9729 website: www.raybar.com www.xrayglass.com	RAY-BAR WOOD STUD FIRE RATED FRAME RB-FRWF
--	---